



Proposed Wind Energy Project

Newsletter - September 2013

WORKING WITH YOU

We are committed to working closely with the community throughout the life of the project. Community members will play leading roles with early activities including:

- Providing key information about the local area
- Naming the project and designing the logo
- Nominations for the Community Liaison Committee (CLC)

The CLC will be made up of volunteers. Members are responsible for the ongoing consideration of local interests and act as a link between the development team and the community at large. If you are interested in being part of the CLC or know someone who is a good candidate, please contact us by phone or email, or join us at our upcoming open house.

FIRST OPEN HOUSE:

Come and join us at our first open house session.

When: Tuesday, October 1st from
6:30 pm – 9:00 pm

Where: Ellershouse Community
Hall, 429 Ellershouse Road,
Ellershouse NS

CONTACT US

If you have questions prior to the open house, do not hesitate to contact us:

Mary-Frances Lynch
Minas Basin Pulp and Power
902-306-1449

maryfrances.lynch@minasenergy.com

Visit our project website at
www.areans.ca

What is being proposed?

Several Nova Scotia municipal electric utilities are proposing to develop a small wind energy project in West Hants near Ellershouse. Pending approvals from Nova Scotia Environment and the Municipality of the District of West Hants, the project could have 7 wind turbine generators. Construction would start mid-2014 and electricity could be produced for the municipalities by late 2015.

Who is involved?

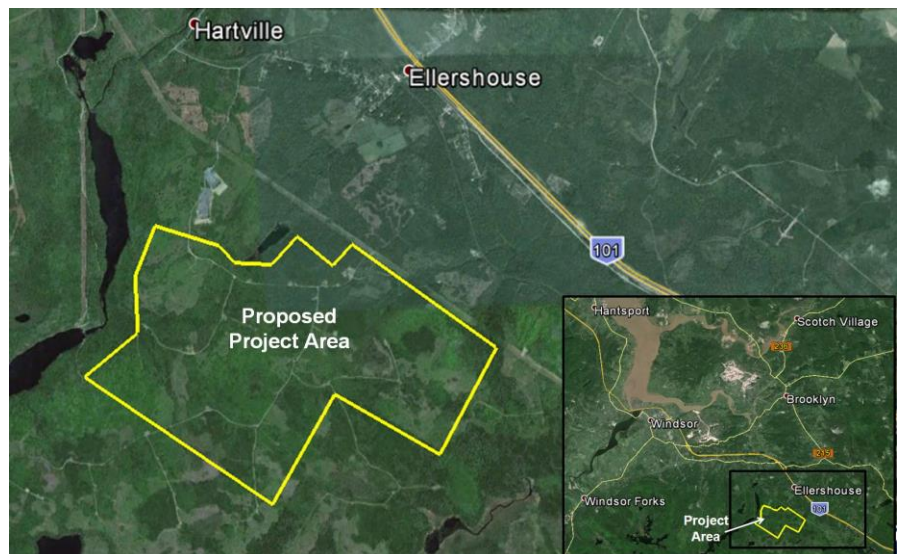
The utilities have created the Alternative Resource Energy Authority (AREA). AREA will own the project and has commissioned Minas Basin Pulp and Power Company Limited to develop the project on its behalf. Staff at Minas have significant experience working on energy projects with local communities throughout the Maritimes.

Required approvals

This project is subject to extensive community engagement, a provincial Environmental Assessment and a municipal Development Agreement process. Studies and research for the Environmental Assessment must demonstrate that impacts on residents, wildlife and the environment have been minimized. The Development Agreement process ensures the project complies with local planning strategies.

Where will the turbines be located?

The project boundary is illustrated below, south of the existing transmission line and east of Panuke Lake.





Why is this project needed?

The government of Nova Scotia has set renewable electricity targets of 25% for 2015 and 40% for 2020. This project will help municipal utilities achieve this goal. The wind farm will be a municipally owned asset, generating clean electricity and reducing dependence on fossil fuels.

Why this location?

Immediately east of Panuke Lake is an ideal location for wind energy, first and foremost because of its reliable wind resources. Preliminary work also suggests that this is an environmentally suitable location. These factors, combined with a very strong electrical grid connection, make this a great site for a small municipal wind farm.

What does this mean for our community?

Wind farms bring many benefits to rural communities in both the short and long term. The development team is committed to employing local resources wherever possible. This project will enhance the community's economy, create a greener energy supply and

increase opportunities for local employment and education. The project also provides residents with opportunities to engage with Minas on local energy issues.

The wind farm is compatible with existing local activities such as agriculture, forestry and recreation. The construction work will increase demand for local materials, food and lodging services. The wind farm will also provide additional tax revenue to West Hants.

Minas is open to suggestions from the community about the benefits which you would like to see arising from the project. Please contact us or visit us at the open house to share your ideas!

Stakeholder Engagement Process



OUR COMMITMENT TO COMMUNICATION

Input from the community is a vital part of this project. The coming months will include:

- Newsletters
- Open houses
- Community Liaison Committee
- One-on-one visits with residents
- Project website at www.areans.ca

For up-to-date information, you can access our website at www.areans.ca. If you have any questions or would like to meet with project team members, please contact Mary-Frances Lynch by phone or email at 902-306-1449 or maryfrances.lynch@minasenergy.com.

FIRST OPEN HOUSE:

Tuesday, October 1st, 2013

6:30 pm – 9:00 pm

Ellershous Community Hall

429 Ellershous Road, Ellershous NS